



Registered Charity Number: 215340

Bolton Deaf Society

Bark Street, Bolton, BL1 2AX

Contact: Tracy Davies - 07856 325849

Email: tracy@boltondeafsociety.co.uk

Telephone: 01204 521219



Bolton Deaf Society

Providing Services to Deaf and Hard of Hearing People

BEFRIENDING SERVICE

Supporting D/deaf, Deafened, Hard of Hearing and Deafblind people across Bolton

Interested in spending time with someone with similar interests to you?

Do you sometimes feel lonely or isolated?

Our befriending service helps reduce social isolation

Volunteers can dedicate their time to offer support to you through activities such as:

- Going for a coffee
- Going for a walk
- Help to go shopping
- Help with joining a club
- OR just having a chat at home

GET IN TOUCH and we will match you with a fully trained volunteer



Bolton Deaf Society

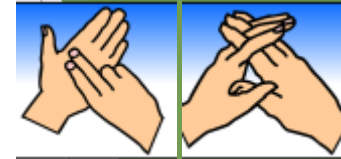
Providing Services to Deaf and Hard of Hearing People

Tracy Davies
Development Officer
&
Deputy Centre Manager

Email: tracy@boltondeafsociety.co.uk

Tel: 01204 521219

Mobile: 07856 325 849



SENSORY ADVOCATES NW

History

Who we help

What is advocacy

What we do

Different Types of Advocacy

Rules and Regulation

History

- ▶ We started Independent Peer (Generic now known as community Advocacy) in 2013 at Bury Deaf Centre. Bury Deaf Centre is now Communic8te Bury.
- ▶ We started IGA Bolton Deaf Society in June 2014. Which then became our base.
- ▶ We also started to provide IGA for Bolton Blind Centre now Henshaws in 2015.
- ▶ We then started providing IGA at Manchester Deaf Centre in 2016.

Who we help.



- ▶ Profoundly Deaf.
- ▶ Hard of hearing.
- ▶ Deaf/Blind.
- ▶ Carers.
- ▶ Blind.
- ▶ Anyone without representation.



What is advocacy.



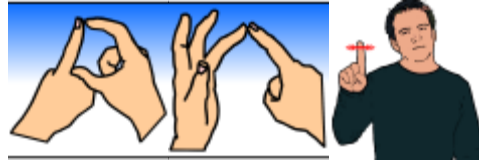
- ▶ Give individuals the power to be understood within society their own view wishes opinions and choice whether formal or informal to change a situation.

.

(SEAP definition from internet).

- ▶ Advocacy in all its forms seeks to ensure that people, particularly those who are most vulnerable in society, are able to have their voice heard on issues that are important to them. Defend and safeguard their rights. Have their views and wishes genuinely considered when decisions are being made about their lives.

What we do



- ▶ Help fill all forms in, explain what they mean to British Sign Language users. Either with our own communication skills. And also through an BSL interpreter and or Lip-speaker.
- ▶ Collect supporting evidence for clients benefit forms.
- ▶ Accompany to Medical's once stop shop, housing agencies doctors appointments. Etc.
- ▶ In fact anything to do with day to day living.

Different Types of Advocacy.



There are many different types of advocacy.

Statutory Advocacy. People have a legal right to these advocates.

- ▶ Independent Mental Health Advocacy.
- ▶ Independent Mental Capacity Advocacy.
- ▶ Independent Complaints Advocacy.
- ▶ Independent Care Act Advocacy.

Our advocacy role.

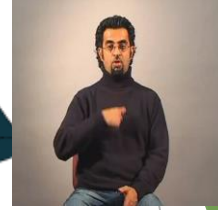


All advocacy can be instructed or non-instructed.

Generic, Peer, Citizen, Group, Self, Community, Paid and Case

Our advocacy service covers (Generic), which incorporates Peer, Citizen, Community, and Case.

Some Advocacy roles can overlap.



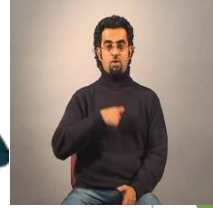
Case Advocacy we have been asked by council's to help. Especially, when this covering a deaf parent, with a deaf child or complex needs in transition. Also, by council when the client has rights to be supported with advocate of their own choice, the social worker have contacted us through Bolton deaf society to ask for support.

Peer Advocacy, because one of our advocates is partially sighted and hard of hearing. Another is profoundly deaf British Sign Language first language. So have empathy.

Some Advocacy roles can overlap.

Cont.

Community Advocacy. Involves groups of people acting to affect, positive change. That can includes partnerships to change things. Example 38 degrees.



Rules and regulations



- ▶ All Advocates work to the Advocacy Code of Conduct.
- ▶ There is also a Quality Performance Marker
- ▶ Every Advocacy Service will have all policy that all organisations have.

ONE IMPORTANT PART OF ADVOCACY IT IS NOT ADVICE.

Service User Statistics

